

Mission >> As a strong and progressive community hospital, we commit to providing high quality and compassionate care in a sustainable manner.

Vision >> A trusted community hospital providing exemplary care to you and those you love.

For Immediate Release

Expansion of Scope for ESHC COVID-19 Assessment Centre

January 12, 2022

ESSEX COUNTY - Over the coming days and weeks, the provincial government is anticipating a rapid increase in health services utilization. To help conserve needed capacity for patients requiring emergency services, Ontario Health has requested that several COVID-19 Assessment Centres (CAC) expand their scope to include clinical services to support people with known or suspected COVID-19 infection who meet specific criteria. Erie Shores HealthCare CAC is one of the centres that will offer this style of care to our community.

The Erie Shores HealthCare COVID Clinical Assessment Centre is not intended to replace or reduce testing capacity but rather augment the existing assessment centre model. It is designed for patients with known or suspected COVID-19 with worsening symptoms or advised by a health care professional that they require an assessment and diagnosis for their symptoms. This is because their symptoms cannot be safely self-monitored at home, but they are also not experiencing severe symptoms that would require emergency care.

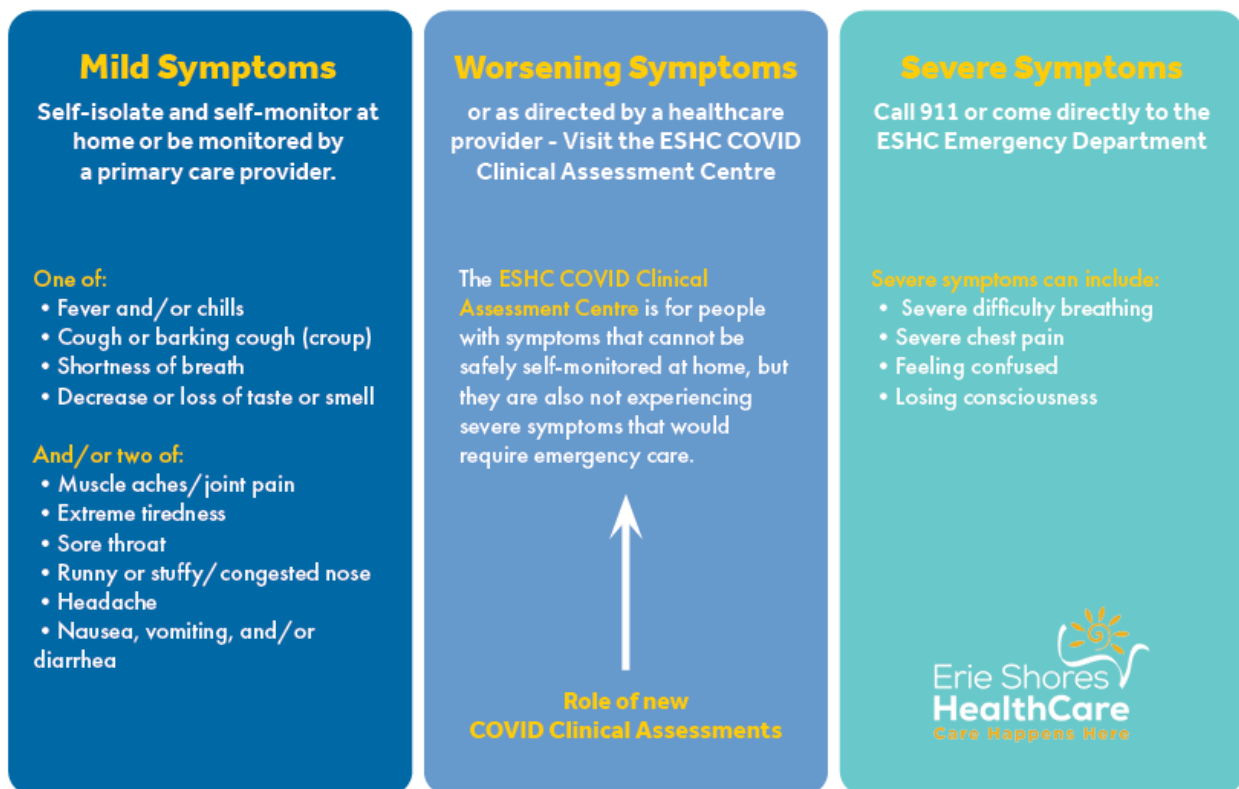
Either a physician or nurse practitioner will conduct the clinical assessment, including assessing oxygen saturation, vital signs and identifying relevant risk factors. Patients may be tested using a rapid test, if appropriate, and following the provincial testing guidance. Following the assessment, the patient could be sent home, receive a prescription or possibly referred to the Emergency Department for further testing.

The Erie Shores HealthCare COVID Clinical Assessment Centre is not intended for patients with mild COVID-19 symptoms who are self-isolating and self-monitoring at home. It is also not for patients with severe COVID-19 symptoms who should call 911 or go directly to the emergency department.

While the scope is changing, the Erie Shores HealthCare COVID Clinical Assessment Centre will continue to offer PCR testing to individuals who meet specific eligibility criteria. Those wishing

to book an appointment for a Clinical Assessment or PCR Test can visit the hospital's online booking tool at: <https://ereshoreshealthcare.ca/COVID19AssessmentCentre>

A graphic on the following page has been developed to distinguish who should access the Erie Shores HealthCare COVID Clinical Assessment Centre.



ABOUT ERIE SHORES HEALTHCARE

Erie Shores HealthCare, located in Leamington, Ontario, cares for the residents of Essex County. With over 500 staff, Professional Staff and volunteers, Erie Shores provides an array of specialized acute, complex continuing care, allied and ambulatory care services. For more information about Erie Shores HealthCare, visit www.ereshoreshealthcare.ca or follow us on Facebook, Instagram, LinkedIn and Twitter.

For media inquiries, please contact:



Kevin Black
Communications and Public Affairs Specialist
Erie Shores HealthCare
519-819-8943 | kevin.black@eshc.org